



# West Harbour Go Station

Piling

Hamilton, ON

## + Project snapshot

- Metrolinx Expansion to Niagara Region
- \$50M project for new platform, station and parking structure
- Site parallel to active rails tracks

## + Project description

Soletanche Bachy Canada (SB Canada), working with Kenaidan Contracting took on the project that forms part of Metrolinx's plan to expand train service to the Hamilton area via the Lakeshore West corridor along the current CN Rail main lines. The project included construction of a new platform, station and multi-level parking deck that will accommodate 300 vehicles.

## + Site conditions

A major challenge with this project was working directly beside active rail tracks. SB Canada also were installing individual Tie-backs that were up to 60m in individual size with a diameter of 250mm. The continous caisson wall was to facilitate a major grade separation (road/rail).

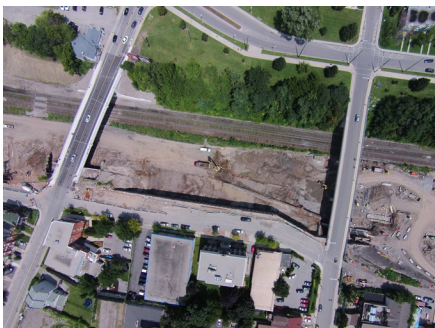
## + Innovative solutions

A continous caisson wall measuring a total of 4900m<sup>2</sup> with 3000m of tiebacks were installed. A total of 645 high capacity piles, measuring 14,900m in length and 500m of Tie-backs were also installed, 24 of which were low headroom piles.



**Owner**  
Metrolinx  
**Consultant**  
IBI Group  
**General Contractor**  
Kenaidan Contracting

**Bermingham personnel**  
Greg Stokkermans  
**Period of work**  
June 2014 - May 2015



©SB Canada 2019 – Photos: SB Canada photo library